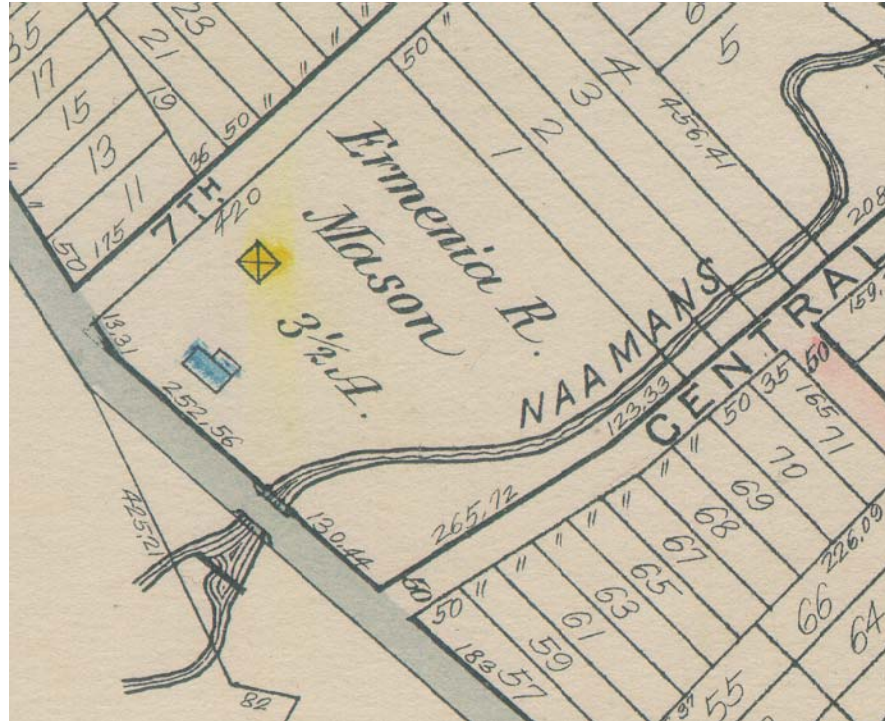


**Boothwyn Farms 1913, McCay's Bridge** – A section of Meetinghouse Road (then called Chichester Avenue) between what is now Chichester Avenue and Naamans Creek Road is shown below. At the time, the road crossing the East Branch of Naamans Creek was a covered bridge known as McCay's Bridge. The Mason family owned the property near the bridge at the time. They were farmers and as can be seen below, were proud of their 'White Plymouth Rocks'. Note the black line across the wide part of the creek. This was a dam used to divert water for a millrace. It created a large pool of water that was often used for swimming but also on occasion was known for tragedy.



McCays Bridge, Near Boothwyn, Built 1852.

Photo by R. G. Phillips, publisher, Chester.

