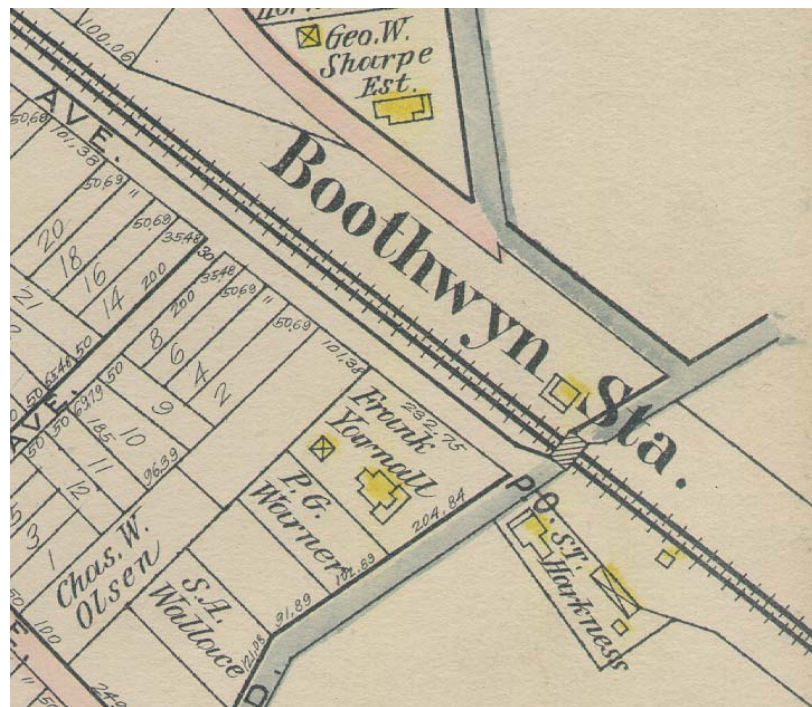


**Train Stations, 1913** – The B&O Railroad made its way through Upper Chichester in the mid 1880's and had three stops along the way. Heading from North to South where the Twin Oaks, Boothwyn and Ogden Stations. The following shows their locations in 1913.

The Twin Oaks Station was a beautiful Victorian design that was located just North of Pennel Road (Rt 452) near the current train bridge. On the map shown, Meetinghouse Road is branching off to the left at the top.



Boothwyn Station was located just South of what is now Chichester Avenue. Currently there is a carwash business located where the station once was.



The last stop before leaving Pennsylvania was the Ogden Station. It was located off of Naamans Creek Road in what would now be the parking lot of Maximillian's Restaurant. There was once a boardwalk from the station all the way to a hotel / boarding house on Mill Road that was installed to keep the guests from getting their feet too dirty.



All three of the train stations are long gone as passenger service eventually ceased when travel by automobile became more popular and convenient.

Below shows all three train stations lined up as represented on a 1936-51 Railroad map.

